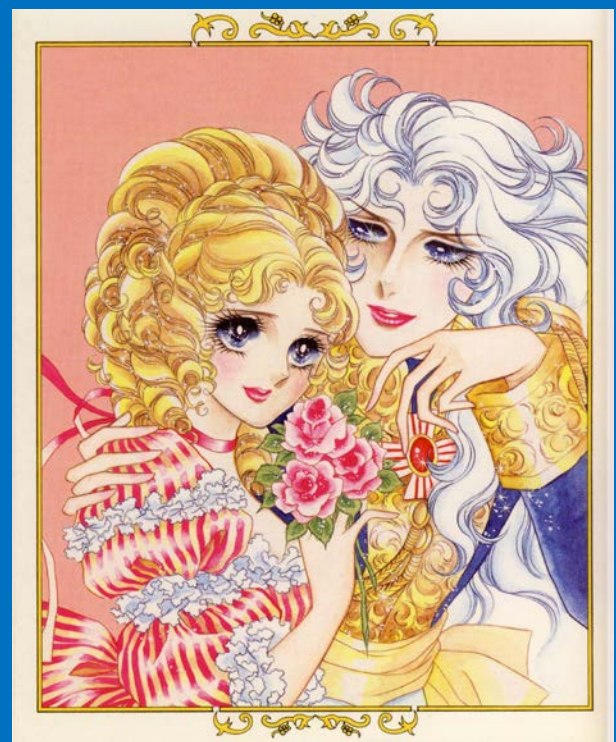


# SPRING 2017

## HA 543/550 HISTORY AND THEORY OF MANGA

MW 11:00 a.m.-12:15 p.m.  
Spencer Museum of Art RM. 208  
Instructor: Professor Maki Kaneko



In the last two decades, *manga* has attracted significant scholarly attention. While it has been studied in a number of different academic fields including art history, literature, media studies, anthropology, sociology and so on, the recent development of “*manga study*” has started to form an independent academic discipline. This course explores and examines new scholarship and their methodologies, as well as the historical development of *manga* from the late 19<sup>th</sup> century to the present day.